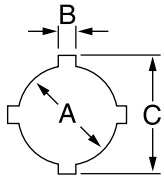


# SPECIAL APPLICATION PUNCHES

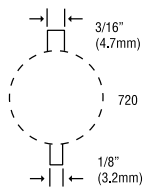
## Oiltight Punches with Notches

Oiltight sizes also available without notches. Standard, Slug-Buster® and Slug Splitter® designs.



### CAT./UPC NO

HOLE SIZE						MAXIMUM CAPACITY MILD STEEL		OPERATION TYPE	SET (INCLUDES PUNCH, DIE DRAW STUD AND NUTS)	PUNCH	DIE	DRAW STUD	BB DRIVE NUT	COUNTER NUT	MINIMUM PILOT HOLE		WEIGHT		OPTIONAL ADAPTER FOR HYDRAULIC DRIVERS
IN			mm			ga	mm								IN	mm	LB	KG	
A	B	C	A	B	C														
.875	.125	1.000	22.5	3.2	25.4	14	2.0	Hand/Hydr.	60238	60239	60250	60117	60165	60258	.625	15.9	2.1	.95	601670
1.210	.190	1.380	30.5	4.8	36.0	10	3.5	Hand/Hydr.	60242	60243	60249	60117	60165	60258	.625	15.9	2.7	1.2	601670



## 720 Keyway Punch

- Eliminates time-consuming hand sawing and filing when making keyways for push-button switches
- Use as a nibbler to make wider or deeper keyways in up to 10 ga mild steel
- Punches 1/8" (3.2 mm) or 3/16" (4.8 mm) keyways for 7/8" (22.5 mm) or 1-7/32" (30.5 mm) push-button holes

### REPLACEMENT DRAW STUDS FOR RATCHET WRENCH

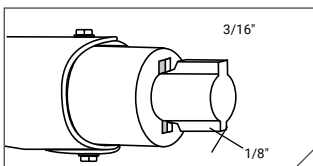
CAT NO.	UPC NO.	DESCRIPTION	WEIGHT	
			LB	KG
720	783310265344	Keyway Punch	2.8	1.27
26536	783310265368	Punch	-	-
26538	783310265382	Die	-	-

**NOTE:** Not for Stainless Steel

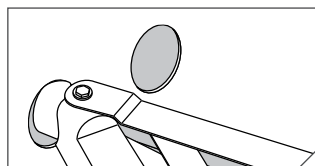
☞For use with any Greenlee Hydraulic Driver or Battery-Powered Driver

For maximum draw stud life, Greenlee recommends the use of battery or hydraulic drivers

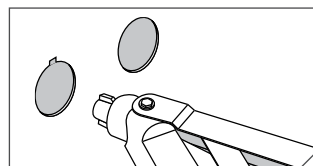
\*\*Sold as Unit only



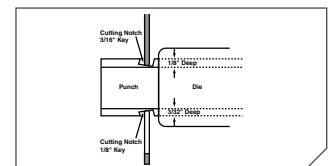
1. Locate proper cutting notch on the cutting head.



2. Place cutting notch inside edge of hole and cut keyway.



3. Withdraw the punch.



4. Use as a nibbler to make wider or deeper keyways.